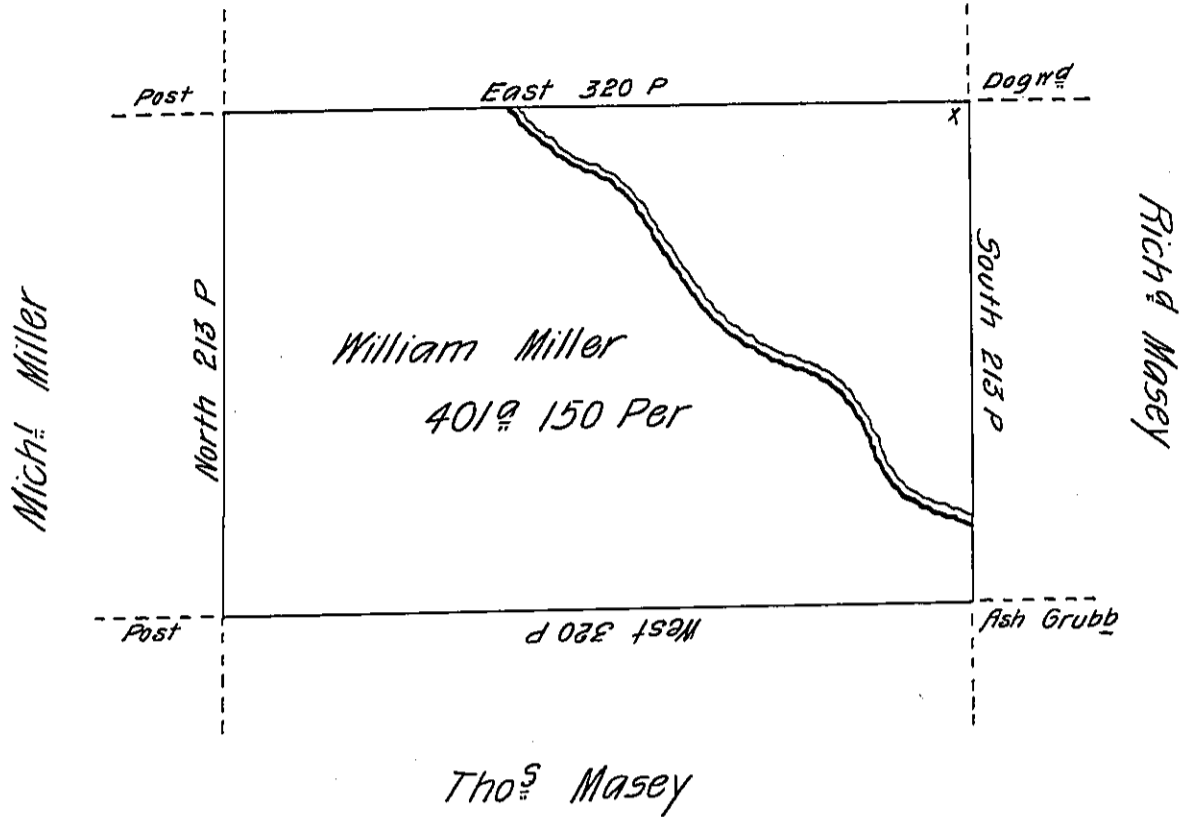


John Mitchel



Situate on the West side of French Creek in Allegheny County.

Containing 401 Acres & 150 P. and allowance of six Per Cent for Roads &c.
Surveyed the 3^d day of June 1795. In Pursuance of a Warrant dated the
30th day of May 1792.

Wm Power Dy. S^r

To Daniel Brodhead Esq^r
Surveyor General.

IN TESTIMONY that the above is a copy of the original remaining on file in
the Department of Internal Affairs of Pennsylvania, made
conformably to an Act of Assembly approved the 16th day of
February, 1833, I have hereunto set my Hand and caused
the Seal of said Department to be affixed at Harrisburg,
this second day of January 1906.

Francis P. [Signature]
Secretary of Internal Affairs.